

The "Better Business" Publication Serving the Exploration / Drilling / Production Industry

New Technology Improves Artificial Lift Capabilities

By Al Pickett
Special Correspondent

Necessity is often the mother of invention and in no industry is this more true than in upstream oil and gas.

A sampling of the many technological advances in the ever-changing world of artificial lift includes new pumping unit efficiency and safety improvements.

Pumping Unit Safety System

A pumping unit sitting idle does not necessarily mean an inactive well. The pumping unit may be controlled by a timing device for automated startup. So what happens if a worker is under the pumping unit when it is activated? Or, worse yet, what if a child is playing around the pad when a pumping unit starts? Unfortunately, the answer can be serious injury or even death, says ProTech Safety Systems Inc.'s Donnie Reagan, which is why ProTech has developed the DSU-30, a delayed startup warning system that helps prevent accidents on pumping units.

"The DSU-30 not only stalls the startup signal for 31 seconds, but also warns anyone around the unit to clear the area immediately in English followed by Spanish," Reagan explains. "What do lights or buzzers mean? People do not always pay attention to lights or buzzers."

Fences, signs and beeping alarms have all been utilized over the years to keep people out of harm's way, but have not always proven effective in preventing accidents, he says, explaining that the DSU-30 issues bilingual voice warnings and then counts down for 10 seconds, with a final warning at five seconds, before releasing the startup signal to activate the

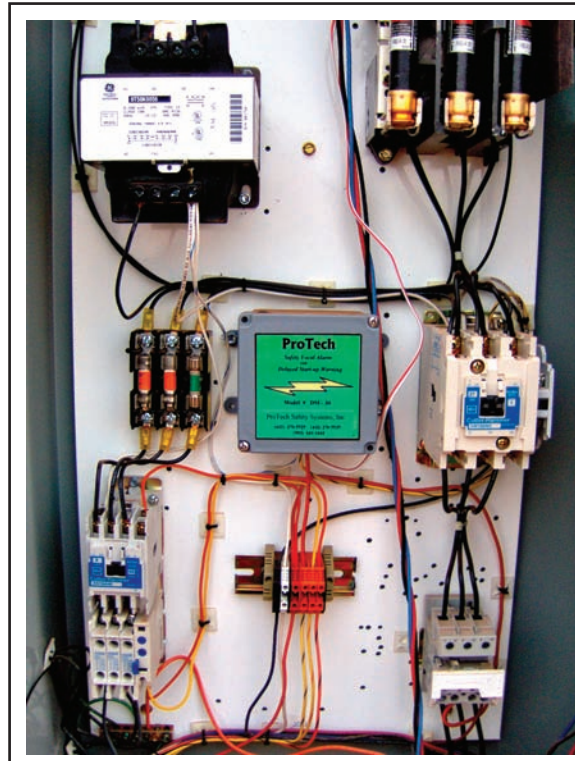
pumping unit.

"We are offering the safest method available to reduce liability if an accident occurs," Reagan remarks. "This product has all the characteristics of becoming a requested or required product in the future with most oil companies.

Reagan notes that in West Texas, it is not uncommon to see pumping units on school property, golf courses and in residential areas. But he says accidents can also occur in remote locations. "The

DSU-30 keeps the experienced workers on the production site more alert and aware of startups," he points out.

The unit fits inside the existing control box, features a volume control, and can power two eight-ohm speakers if necessary, Reagan notes. "We feel like it will save lives and prevent injuries, for both long-time workers and people who wander onto a producing property," he states. "We are offering a product to the industry that reduces liability and saves lives and injuries." □



ProTech Safety Systems Inc.'s DSU 30 is a delayed startup warning system that helps prevent accidents on pumping units. The DSU-30 sounds bilingual voice warnings and then counts down for 10 seconds, with a final warning at five seconds, before releasing the startup signal to activate the pumping unit.

DSU-30

Delayed Start-Up Warning System
Designed for Automated Pumping Units
SOUNDS OF SAFETY



- Prevents serious injuries and/or fatalities resulting from the start-up of automated pumping units.
- Delays the start-up and activates a bilingual verbal warning in English and Spanish to clear the area.
- Designed for simple installation in existing electrical panel.

ProTech Safety Systems, Inc.

P.O. Box 1461 Big Spring, TX 79721
432-264-7969 Toll Free 866-470-7969
www.protechsafety.net